



CARGO-LIFT

—Shoulder Eye Bolts



Shoulder Eye Bolts is made of steel material, firm and durable. It can be fixed on the wood, steel plate, plastic board and other materials. Working with lifting hook and hoisting equipment, it helps to achieve rapid lifting or moving of goods. Also it can be linked with other rigging for fixing materials or equipments.

Product Features

*Material: C-1030 forged steel, C-15 annealed steel

*Finish: Mill

*Screw thread class: 2A (Imperial) 6g (Metric)

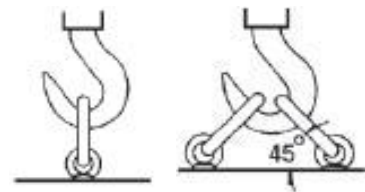
*Variant resistance safety factor: 4: 1

*Breaking resistance safety factor: 5: 1

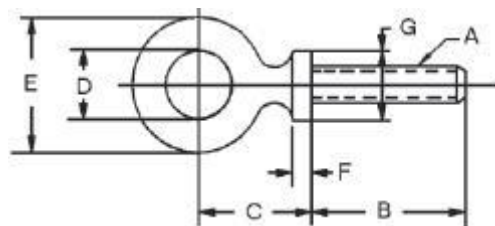
*Space must be reserved between screw thread and shoulder bar.

*Original made in USA, test certificate of original manufacture

*For other than vertical loads, general practice is to use 60% of the safe working load factor for a load 30° from vertical; 33% of vertical safe load for load 45° from vertical; and 20% of vertical safe load for load 90° from vertical.



Structure & Application



Specification

Shoulder Eye Bolts (Imperial)

Model	Max load (Lbs)	Screw Thread Specification (Inch)	B (Inch)	C (Inch)	D (Inch)	E (Inch)	F (Inch)	G (Inch)
18561	210	M6×1.0	25.4	20.6	19	30.0	3.9	1.5



18562	500	M8×1.25	31.7	29.4	25	43.0	4.8	17.5
18563	740	M10×1.5	35.0	33.3	27	46.0	5.2	19.8
18564	1030	M12×1.75	38.0	36.5	30	54.0	5.6	22.2
18565	1600	M16×2.0	44.5	43.6	35	65.0	6.3	27.0
18566	2860	M20×2.5	57.0	55.6	41	81.0	9.5	36.5
18567	3850	M24×3.0	63.5	61.1	44	90.4	10.3	39.7
18568	6400	M30×3.5	76.0	74.6	55	112.7	12.7	47.6
18569	8970	M36×4.0	89.0	87.3	63	131.8	14.3	55.6
18570	11960	M42×4.5	95.0	93.6	73	152.4	15.1	60.3
18571	16400	M48×5.0	101.6	107.9	82	174.6	17.5	69.8

Shoulder Eye Bolts (Metric) Short

Model	Max load (Lbs)	Screw Thread Specification (Inch)	B (Inch)	C (Inch)	D (Inch)	E (Inch)	F (Inch)	G (Inch)
18551	68	M6×1	13.0	13.0	19.1	36.5	20.0	0.023
18552	136	M8×1.25	13.0	13.0	22.2	36.5	20.0	0.045
18554	318	M12×1.75	20.5	20.5	30.2	52.4	30.0	0.163
18555	680	M16×2	27.0	40.5	34.9	63.5	35.0	0.295

Shoulder Eye Bolts (Metric) Standard

Model	Max Load (Lbs)	Screw Thread Specification (Inch)	B (Inch)	C (Inch)	D (Inch)	E (Inch)	F (Inch)	G (Inch)
18501	500	1/4-20	1	11/16	3/4	1 3/16	3/16	1/2
18502	900	5/16-18	1 1/8	7/8	7/8	1 7/16	3/16	5/8
18503	1300	3/8-16	1 1/4	1 1/16	1	1 21/32	3/16	11/16
18504	2400	1/2-13	1 1/2	1 5/16	1 3/16	2 1/16	1/4	7/8
18505	4000	5/8-11	1 3/4	1 19/32	1 3/8	2 1/2	1/4	1 1/8
18506	5000	3/4-10	2	1 23/32	1 1/2	2 13/16	5/16	1 1/4
18507	7000	7/8-9	2 1/4	2 3/16	1 11/16	3 1/4	3/8	1 7/16
18508	9000	1-8	2 1/2	2 13/32	1 13/16	3 9/16	13/32	1 9/16
18509	12000	1 1/8-7	2 3/4	2 23/32	2	4	15/32	1 11/16
18510	15000	1 1/4-7	3	2 15/16	2 3/16	4 7/16	1/2	1 7/8
18511	21000	1 1/2-6	3 1/2	3 7/16	2 1/2	5 3/16	9/16	2 3/16
18512	28000	1 3/4-5	3 3/4	3 31/32	2 7/8	6 1/16	5/8	2 1/2
18513	38000	2-4 1/2	4	4 1/2	3 1/4	6 7/8	3/4	2 7/8



UNITED-PORTS
One Call, Total Delivery

Contact us



UNITED-PORTS
One Call, Total Delivery

United-Ports (Shanghai) LTD.

Add: No. 3293, South Hongmei Rd,
Minhang District, Shanghai, China

TEL: 86-21-34634180

FAX: 86-21-34625293

Web: www.cargo-protec.com.cn

Mail: info@united-ports.com